



BUENA VISTA HILLS

Boutique Modern Villas



2	WELCOME
4	ENJOY LIFE
6	RELAX
9	STUNNING LOCATION
13	PURE LUXURY
15	THE PROJECT
16	TYOLOGIES
28	HIGHEST STANDARDS



Enjoy Life

Hundreds of thousands of tourists come to the Costa del Sol from all parts of the world to enjoy its stunning beaches, the sun and the great lifestyle.



Buena Vista Hills is the ideal location for those who love luxury and exclusive living. Enjoy a day's shopping in the elegant boutiques of Puerto Banús, delight your experience in Michelin star restaurants and live it up in the sophisticated beach clubs.

Besides all this, take a trip to one of the most exclusive ski resorts in Spain, Sierra Nevada. There are very few locations that combine so many attractions in the same place like the province of Málaga does: outstanding golfing facilities, the wide range of activities on offer and the best climate in Europe.



Relax

The Costa del Sol has everything that you can possibly dream of. In addition to great beaches and excellent weather conditions, you also get to enjoy beautiful landscapes all along the 150km stretch. Not to forget the delicious Spanish and international cuisine and the most beautiful local customs and traditions.

The area has a lot to explore, besides its magical romantic villages and the rich cultural heritage. If you would like to buy a second home, the Costa del Sol will be the perfect choice! The fully developed infrastructure with its great connections to all main european airports will make your travels comfortable and easy.

The Costa del Sol is the perfect destination to relax your body and soul.



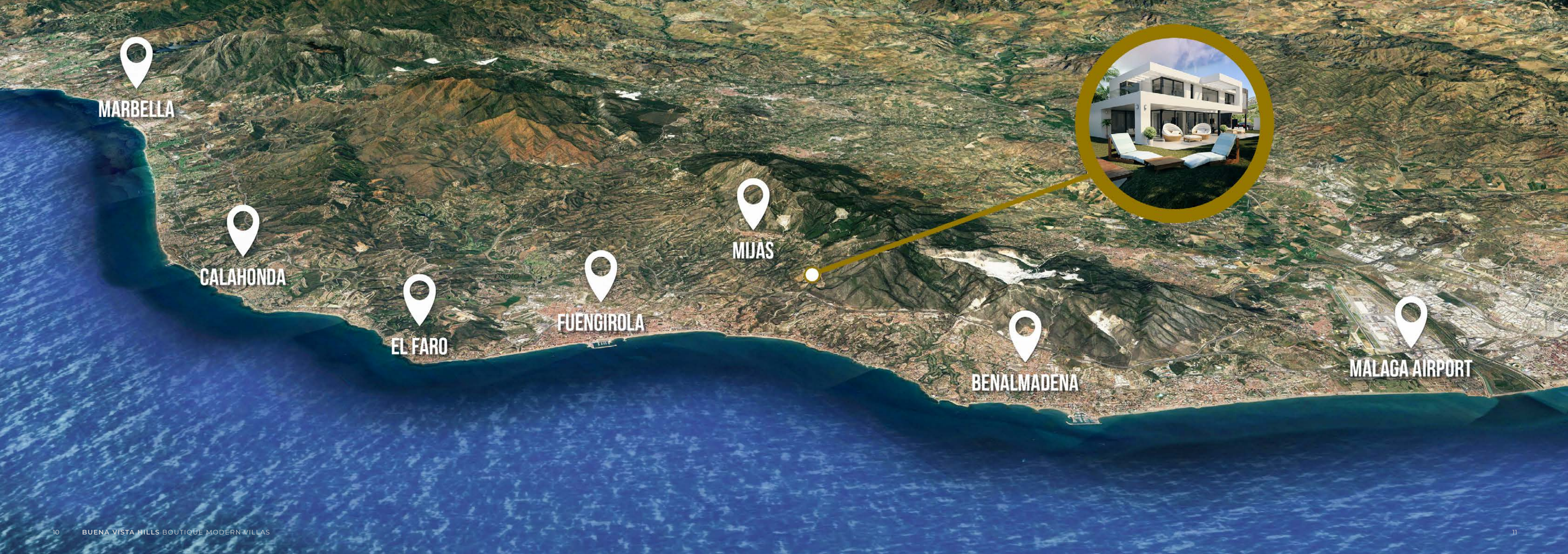


Stunning Location

This project is located in a private community by the name of "Urbanizacion Buena Vista" an excellent location in Mijas with sea and mountains panoramic views.

Near to the commercial area of El Higuero and less than 15 minutes driving to Malaga International Airport, a perfect location to own a luxury contemporary boutique villa.







Pure Luxury

Luxury lifestyle in one of the most desirable locations on the Costa del Sol

Buena Vista Hills is a luxury villa project set in a strategic location providing its residents impressive panoramic views of the sea. This new exclusive turnkey villa development is the perfect place to live in the Costa del Sol!

Our selection of magnificent villas offers a contemporary design using eco-friendly sustainable and high quality materials. This combination

of design and technology allows to build stylish villas with high levels of energy efficiency. Our famous architects are offering a customized design and layout for each client.

One of the most notable design features is the use of double height ceilings and exceptional large windows to ensure light and space throughout the whole villa.



The Project

As a resident of *Buena Vista Hills* you will have a full range of quality materials and services to choose from in order to make your dream home just the way you desire.

- Constructed villa with private pool
- Panoramic sea and mountain views
- Built size: From 264 m2 to 380 m2
 - 3-4 Bedrooms
 - 3-5 Bathrooms
- Fitted kitchens and bathrooms
 - Plot from 520 to 950 m2
 - Gated community



Villa 7A



Villa 1B



Villa 2A



Villa 2B



Villa 3A

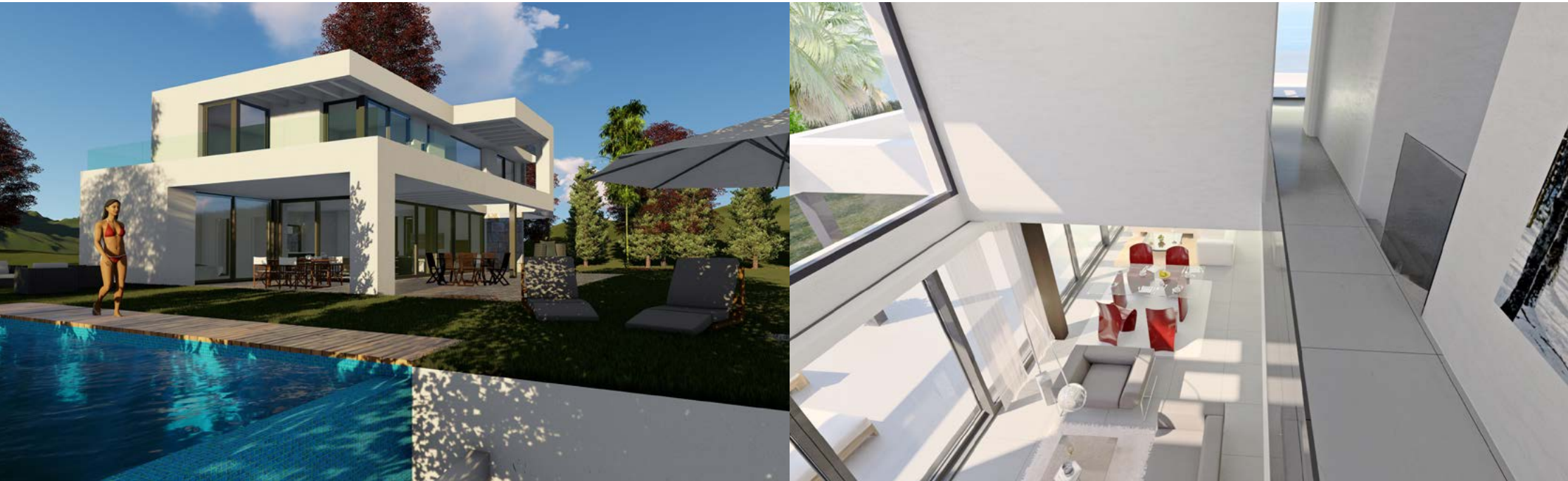


Villa 3B



Highest Standards

Technical Features of Construction



Foundations & Structure

- Reticular slab, beams and columns in reinforced concrete.
- Quality control made by a certified company, external audit company (OCT) for verification.





Facade

- Formed by factory solid brick on its outer face, plastering of interior face.
- Thermal insulation panels of rock wool or polyurethane foam.
- Thermal and acoustic insulation through air indoor camera with double cavity.
- Outside rendering with plastering mastered with cement mortar and finished with highest quality "petrea" paint in three hands.

Interior Walls & Ceilings

- Partition walls formed with double hollow brick partition, plaster, render and finish painted in white color.
- Thermal insulation panels of rock wool or polyurethane foam.
- Drop ceilings with dry partition in distributors, kitchen and bathrooms.
- Double height ceiling in hall.

Flooring

- Ceramic flooring quality 90x90 cm by SALONI or similar in floors of living areas, kitchen and bedrooms.
- Ceramic flooring quality 40x40 cm by SALONI or similar in floors of bathrooms.





Tiling

- In bathrooms lacquered with ground tile porcelain polished technique of 30x60 cm. color or marble finish by SALONI or similar.

Paint

- Facade painted with highest quality "petrea" paint.
- Interiors painted in smooth plastic white paint.

Sanitary & Plumbing

- Sanitary equipment by JACOB DELAFON or similar.
- White porcelain vitrified wash basins built in marble countertop with under furniture.
- Shower plates.
- Wall suspended lower tank toilets in white colored vitrified porcelain.
- Single handle faucets by GROHE or similar.
- Hot water production by solar energy with heat pump support.
- Sanitation made of soundproof PVC.



Climate Control Facilities

- Air conditioning cold / heating in all rooms from two central equipment systems (one per level) by Samsung or Mitsubishi or similar. 6000 frig/h y 6000kcal/h.

Electricity

- High level of electrification mechanisms by NIESSEN or similar.
- Telephone and television points in every room of the house.
- Electronic doorkeeper for gate control.

Kitchen

- Top quality PVC kitchen cabinets with matt steel and satin glass doors (color to be chosen).
- Granite countertops (different models to be chosen).
- Soft-closing mechanisms in doors and drawers (Hettich or similar).
- Decorative extractor hood finished in stainless steel by BOSCH or similar.
- Electric oven in stainless steel finish by BOSCH or similar.
- Induction plate 77 x 45 cm, three cooking zones by BOSCH or similar.
- Sink in stainless steel finish by TEKA or similar.
- Induction plate 77 x 45 cm, three cooking zones by CATA or similar.
- Sink in stainless steel finish by TEKA or similar.



Interior Carpentry

- Steel armored access door white lacked.
- Step doors of pine wood white painted.
- Wooden fitted wardrobes with sliding doors.

Exterior Carpentry

- Windows and doors in white PVC, oscillating parallel by DECEUNINK or similar.
- Double glazing with intermediate air chamber by CLIMALIT or similar.
- Exterior glass with thermal protection and anti-vandalism by CLIMALIT or similar.

Exterior Areas

- Grass planted garden with palm trees.
- Automatic irrigation system.
- Swimming pool Infinity type 4x7 m. with sub-aquatic lights and automatic cleaning system.
- Non slip grate tiles by SALONI or similar.
- Glass range rails with stainless steel posts.
- Fenced perimeter with remote control gate for vehicles access.



